

## Technical facilities Evenementenhal Gorinchem BV

### Electrical Connection

#### 220 volts

Standard 10 Amp @ 2000 Watt. If you need more power, you should hire a power socket. For customized **stands**, you **always** need **an electrical connection** for lighting or any electrical demonstration.

When you have requested an electrical connection you need to bring your own extension cables and power strips if you are building your own stand since there is only one **power point**. This applies to your own stand building as well as for stand construction by Evenementenhal Gorinchem.

### Power

Standard 32 Amp

Standard 63 Amp

Standard 125 Amps

### Stand Building

We use stands made by Octanorm. This stand consists of an aluminum frame in which boards can be mounted.

- Height 2.51 m
- Visible wall height 2.15 m
- Wall Width 0.99 m (including pole thickness)
- Visible wall width 0.95 m (excluding pole thickness)
- Pole Thickness 4.0 cm
- Width fascia 36 cm (including aluminum strip)
- Length fascia 1 m / 2 m / 3 m (depending on stand size)
- Height aluminum strip 5.0 cm
- Aluminum strip width 1.5 cm (the notch in the strip is 0.4 cm wide and 1.2 cm deep)

You may not attach any items the stands; we have special boards for this purpose. These boards can be hung with hooks on the stand and are available from the main reception. Objects up to a weight of 5 kg may be hung on the stand. There is no roofing on the stand.

### Ordering a stand (if you plan on making your own boards)

The following dimensions are used for the stands:

Stand build board: 97 cm x 242 cm

Fascia: 1 m = 28 cm x 97 cm

2 m = 28 cm x 196 cm

3 m = 28 cm x 295 cm

Thickness: 0.3 cm

### Flooring

We use anthracite / black colored carpeting. Your booth space is demarcated by grey carpet. The floors are covered with tiles of 50 x 50 centimeters.

**Lighting**

The lighting consists of a lighting fixture that is hung in your stand providing sufficient lighting for the stand. 50-watt bulbs are attached to the rear of the fascia board. You can use these spots as you wish to highlight certain objects. You can also hire additional lighting in addition to the standard lighting if required.

**Height Halls**

Hall 1: height 6.8 m up to walkway

Hall 1: height 18 m to ceiling

Hall 1 (rear): height 4.5 m (under 1st floor)

1st floor gallery: height 8.0 m

1st floor conference rooms: height 5.0 m

Restaurant 1, 2 and 3: height 2.7 m

Fork lift: (width 1.90 m) (depth 2.43) (height 2.19) (weight 3500 kg.)

**Forklift**

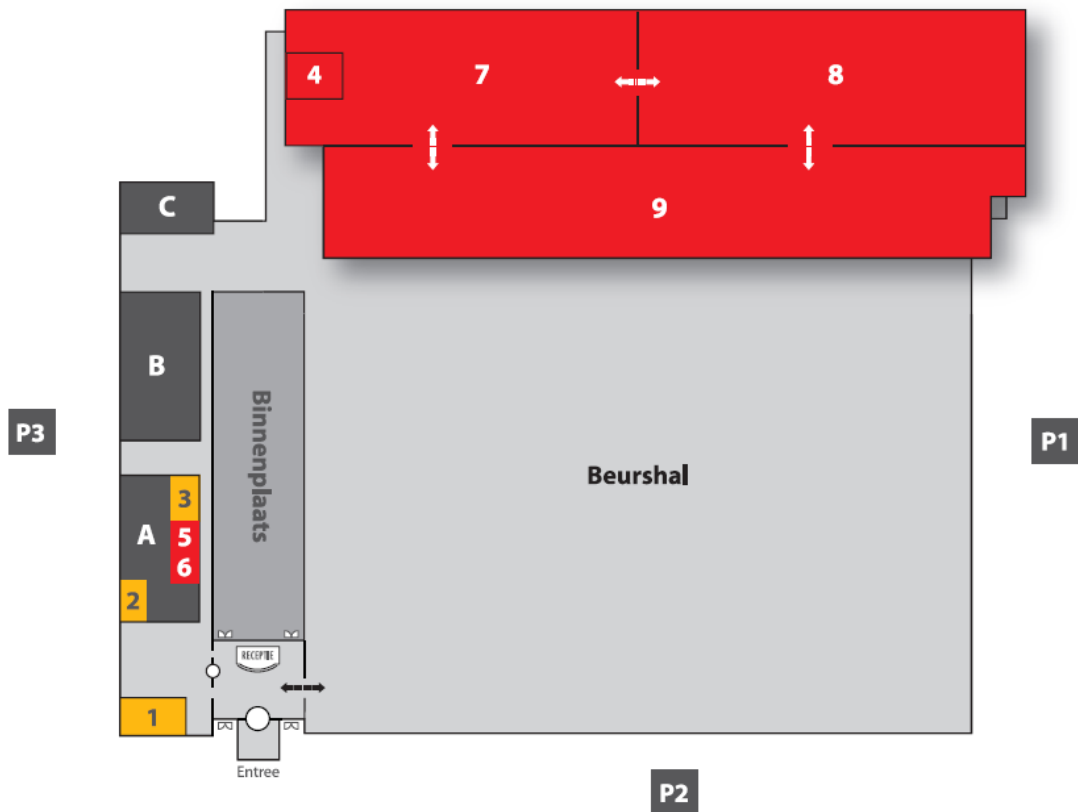
*Flexitec hydraulic platform lift type K2*

Dimension platform lifts: 2m x 4.8m (w x l)

Lifting capacity: 3000 KG (evenly distributed load)

Lifting speed: approx 0.2 meters per second

*Goods only, no people allowed*



### Overzicht Begane grond

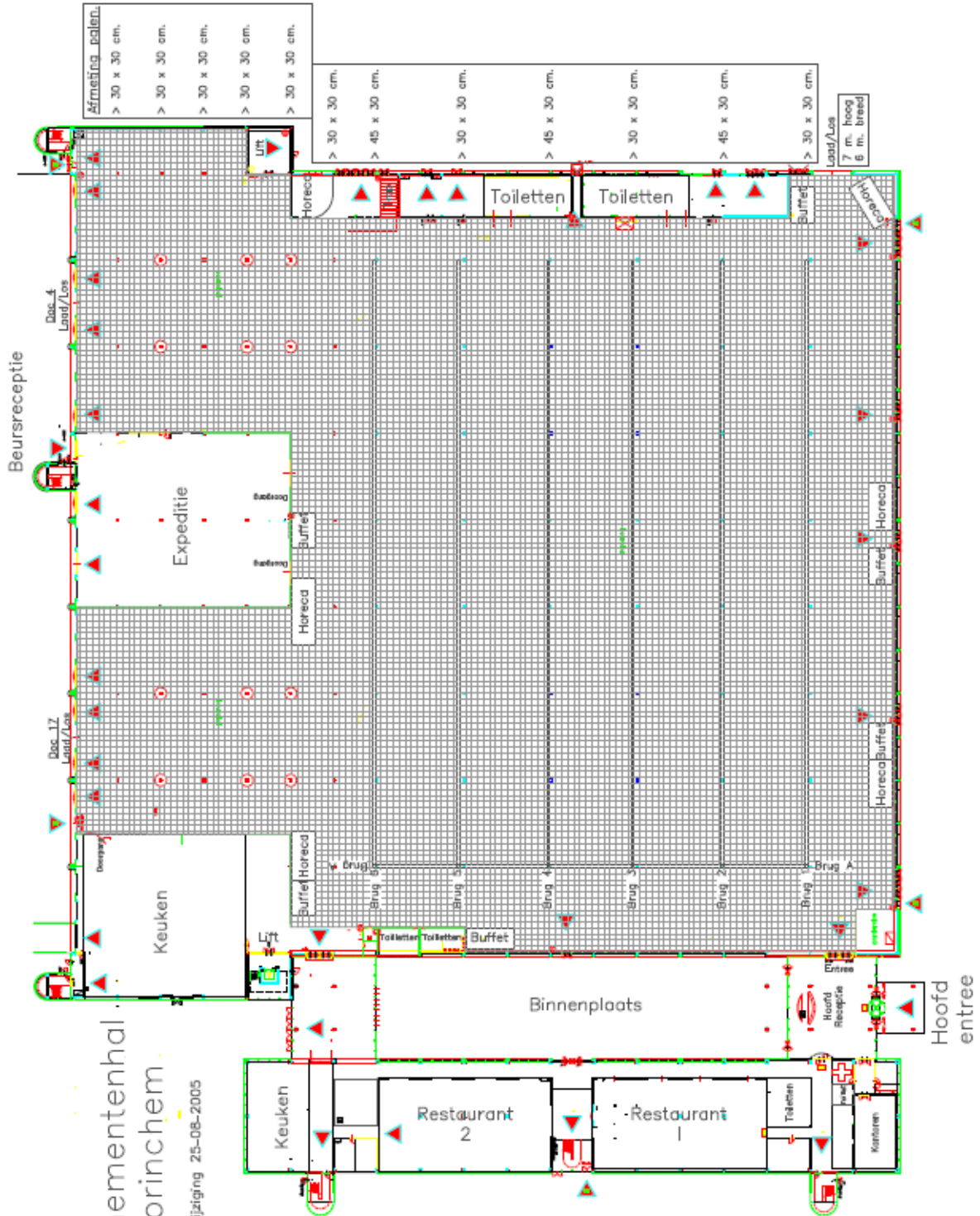
- |                    |                  |                      |
|--------------------|------------------|----------------------|
| 1 = Vergaderzaal 1 | A = Restaurant 1 | P1 = Parkeerplaats 1 |
| 2 = Vergaderzaal 2 | B = Restaurant 2 | P2 = Parkeerplaats 2 |
| 3 = Vergaderzaal 3 | C = Restaurant 3 | P3 = Parkeerplaats 3 |

### Overzicht bovenverdieping

- 4 = Vergaderzaal 4
- 5 = Vergaderzaal 5
- 6 = Vergaderzaal 6
- 7 = Congreszaal 1
- 8 = Congreszaal 2
- 9 = Galerij

# Evenementenhal Gorinchem

Wijziging 25-08-2005



- = brandblussers
- = aanvoer water

**Water aan- en afvoer**  
 Brug 2 - 4 - 6  
 -> beneden afvoer halverwege aanvoer.  
 Rechts einde brug 1e verdieping  
 2 - 4 - 6  
 Hoogte hal = ca. 18 m.  
 = 6,80 m. onder brug  
 = 5 m. onder 1e verdieping

**Vlaggen / banniers**  
 Aan bruggen + hek 1e verdieping tot 150 kg.  
 + vlaggen aan de kant.  
 + 30 vlaggenmasten buiten.

**Vloercapaciteit**  
 Begane grond: 4500 kg.  
 1e verdieping: 500 kg.  
 2e verdieping: 750 kg.

**Laad- en losdeuren**  
 Doc 17 en Doc 4: 4,30 m. hoog, 4,20 m. breed.

- Afmeting palen**
- > 30 x 30 cm.
  - > 30 x 30 cm.
  - > 30 x 30 cm.
  - > 30 x 30 cm.
  - > 30 x 30 cm.

- > 30 x 30 cm.
- > 45 x 30 cm.
- > 30 x 30 cm.
- > 45 x 30 cm.
- > 30 x 30 cm.
- > 45 x 30 cm.
- > 30 x 30 cm.

Laad/Los  
 7 m. hoog  
 6 m. breed

## Exhibitor Rules Evenementenhal Gorinchem

With regard to the rented stand, we would like to draw your attention to the following:

- For any questions regarding this exhibition, your stand or any other matters, please report to the reception building.

They may refer you to:

- **the fair organizer**
  - **the hall administrator**
- Entering Evenementenhal Gorinchem and environs is at your own risk.
  - Smoking is permitted only in the designated areas in Evenementenhal Gorinchem.
  - If you have your children with you during construction, the exhibition and dismantling, we would like to remind you to supervise your children carefully for safety reasons.
  - Owing to security reasons on the second and third trading day, you will have access to the exhibition halls **one hour before the start of the trade fair**.
  - During construction and dismantling you may **not enter the hall with a car**.
  - During the construction, the exhibition and dismantling, no pets are allowed.
  - During construction, free sandwiches and coffee are available at the exhibitors' restaurant.
  - Soup and / or meatballs are available (subject to availability) at your own expense.
  - Hooks are available from the reception building for the hanging of exhibition material on the stand,.
  - It is not allowed to use your own tape on the stands of Evenementenhal Gorinchem. If you want to attach and / or write something, you can collect special boards + hooks from the reception building. If you want to attach something to these boards, there is double-sided tape available at the reception building.
  - You must not nail, drill or rivet anything to the stand or hang heavy objects (max. 5 kg) from the stands, so as to prevent damage to the stand and guarantee the safety of the stand builders.
  - You must not attach any items to the sprinkler systems.
  - Do not use other stands for storage, drinking coffee etc.

- If you want to hang something from the ceiling, you must first discuss it with the organizer prior to the exhibition. After receiving his or her approval, you must ensure you have sufficient certified material, so that you can safely hang your material, and a platform certificate or statement "Safe working at height". You are also free to use a certified company to hang your material for you.
- If you are going to cut any items, you must use plastic to protect the carpet. Plastic is available at the reception building.
- During the construction and dismantling of your stand, you are responsible for ensuring that your booth floor remains clean and for the removal of all garbage. During the build-up day, every stand will receive a garbage bag. Place your garbage in the bag and leave it in the aisle at the end of the day. At the end of the fair, you must ensure that your stand is clean and tidy. Garbage bags are available at the reception building. Cleaning costs will be charged if you do not comply.
- In case of irreparable damage, costs will be calculated as follows:
  - € 55 (including VAT) per booth wall.
  - € 25 (including VAT) per meter fascia.
  - € 70 (including VAT) per aluminum pole
  - € 35 (including VAT) per meter aluminum
  - € 6 (including VAT) per tile
- During the construction and dismantling you will have access to the use of a forklift for up to 2.5 tons (more info from fork lift drivers). We would like to remind you that Evenementenhal cannot be held liable for any damages whatsoever.
- The exhibitor badges are available at the main reception. You can collect them on the first day from 8am onwards. On the second and third days of the fair, the exhibitor badges must be collected one hour before the start of the trade fair. We kindly request you to return these exhibitor badges every night to main reception in case of any change of crew on your stand the next day. After the exhibition, all exhibitors' badges must be returned to the main reception. For any badges not returned, we have to charge € 5 per exhibitor badge.
- Every participating exhibitor is entitled to a free company flag for use inside the stand; you may hang it outside provided there is enough room. It is also possible to hang up additional company flags; the cost per **additional** company flag is € 25.00. Please forward any such information to the main reception. Company Flags can be collected after the fair from the main reception.
- You may not promote your stand and / or flyer at tables, seats in the aisles or in the outdoor area.
- Due to large crowds on Monday, we advise exhibitors building their own stand to construct it on Saturday.
- We trust that you will comply with all of the above.

**We wish you a successful trade fair.**

